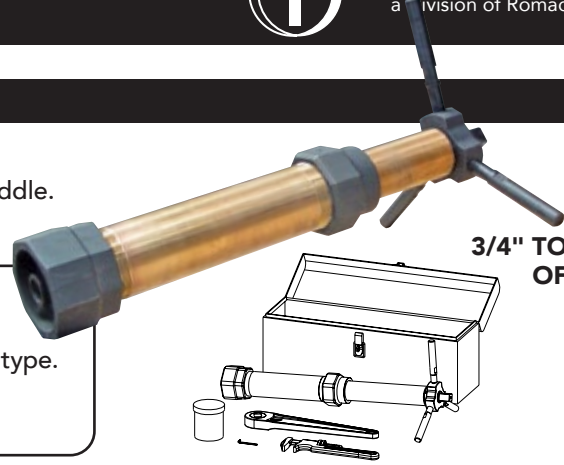


5935™ PIPE DRILLING MACHINE



MATERIAL SPECIFICATIONS

- Weighs approximately 40 lbs.
- 3/4" to 2" range of cuts using a corporation stop and saddle.
- Cuts all types of water mains, wet and dry.



3/4" TO 2" RANGE OF CUTS

TO ORDER:

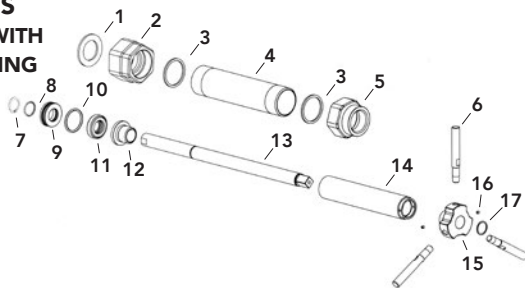
1. Order Base Machine.
2. Order Drills or Holesaws per desired cut size and pipe type.
3. Order Adapters.
4. Order Power Option if desired.

ITEM NUMBER	DESCRIPTION	LIST PRICE
355-00	5935 Pipe Drilling Machine	\$4,045.20
Included with 5935 Machine:		
355-60-4	Adjustable Wrench SPUD	included
355-60-1	Ratchet Wrench	included
355-61	Tool Box	included
355-60-3	1/8" Allen Wrench	included
353-10-1	Tapping Compound	included
DRILL		
354-01-06	3/4" Drill: 5933 (actual O.D. 1 1/16") Requires Drill Adapter 355-12-06	292.36
355-01-408	1" Drill: 5937-1 (actual O.D. 7/8")	733.43
355-01-410	1 1/4" Drill: 5937-1 (actual O.D. 1 1/8")	740.83
355-01-412	1 1/2" Drill: 5937 (actual O.D. 1 7/16")	746.29
355-01-416	2" Drill: 5937-1 (actual O.D. 1 3/4")	986.48
355-04-4	2.5 Drill Extension (Used when doing a 2" tap through a threaded gate valve)	397.74
PVC		
351-01-206	3/4" PVC Cutter (actual O.D. 1 1/16")	218.78
351-01-208	1" PVC Cutter (actual O.D. 1 5/16")	223.73
351-01-210	1 1/4" PVC Cutter (actual O.D. 1 1/8")	246.12
351-01-212	1 1/2" PVC Cutter (actual O.D. 1 3/8")	268.45
351-01-216	2" PVC Cutter (actual O.D. 1 3/4")	290.84
355-12-06	Adapter: 5938 (required for 3/4", 1" and 1 1/4" PVC cutters. Adapter comes with, and requires the use of PVC Adapter: 354-04-3)	654.00
355-04-3	Large PVC Adapter: 9546 (Required for 1 1/2" & 2" PVC Cutters)	316.92

ITEM NUMBER	DESCRIPTION	LIST PRICE
ADAPTERS		
355-05-406	3/4" Female Iron Pipe Adapter: 5936-3	\$432.18
355-05-408	1" Female Iron Pipe Adapter: 5936-3	432.18
355-05-410	1 1/4" Female Iron Pipe Adapter: 5936-3	432.18
355-05-412	1 1/2" Female Iron Pipe Adapter: 5936-1	432.18
355-05-416	2" Female Iron Pipe Adapter: 5936-1	432.18
355-05-420	2 1/2" Female Iron Pipe Adapter: 5936-1	432.18
355-05-506	3/4" Coarse Thread Compression Adapter: 5936-2	432.18
355-05-508	1" Coarse Thread Compression Adapter: 5936-2	432.18
355-05-510	1 1/4" Coarse Thread Compression Adapter: 5936-2	432.18
355-05-512	1 1/2" Coarse Thread Compression Adapter: 5936	432.18
355-05-706	3/4" Fine Thread Compression	460.99
355-05-708	1" Fine Thread Compression	460.99
355-05-712	1 1/2" Fine Thread Compression	460.99
355-05-716	2" Fine Thread Compression	460.99
* Special Adapters can be made per request *		
Note: Female Adapters thread into Part No. 355-37 except the 2 1/2" Female Iron Pipe Adapter which will replace Part No. 355-37. The 355-37 fits 2" Flare Copper Corporation Stops, no 2" Coarse Thread Compression is required.		
* Corp. Stop Adapter Cross Reference at www.romac.com/tapmate-too		

TAPPING COMPOUND		
353-10-1	Tapping Compound	56.44
353-10-3	Tapping Compound / Case (12)	650.93
POWER OPTION		
373-355	Ridgid 690-I Electric Drive w/ 7/8" sq. drive adapter See pg. TM-28	5,120.74
370-70	GF-15 Ground Fault Interrupter Plug (required)	219.13

5935 PARTS INCLUDED WITH 5935 DRILLING MACHINE



REF. NO.	DESCRIPTION	ITEM NUMBER	LIST PRICE
1	Adapter Gasket	355-57-05	\$27.02
2	Bottom Cylinder Coupling	355-37	365.90
3	Top & Bottom Cylinder Gaskets (2 req.)	355-38-57	ea. 19.43
4	Cylinder	355-38	350.35

REF. NO.	DESCRIPTION	ITEM NUMBER	LIST PRICE
5	Top Cylinder Coupling	355-36	605.06
6	Handle for Lead Nut (3 req.)	350-29	ea. 164.47
7	Shaft End Snap Ring	350-20-54	21.18
8	Collar O-Ring (inside)	355-40-5711	POA
9	Collar	355-40	177.89
10	Collar O-Ring (outside)	355-40-5712	3.75
11	Thrust Bearing	355-56	74.21
12	Feed Screw (bottom)	355-43-2	226.36
13	Drill Holder	355-12	554.63
14	Feeder Screw	355-43	699.57
15	Tri-Handle Holder	355-29-1	345.74
16	Set Screw	351-23-512	2.20
17	Spiral Snap Ring	355-54	11.09
Not Illustrated:			
	Ratchet Wrench	355-60-1	615.08
	Adjustable Wrench	355-60-4	189.49
	1/8" Allen Wrench	355-60-3	5.01
	Tapping Compound	353-10-1	56.44
	Tool Box	355-61	498.18

Drill Holders, Drills, Holesaws, PVC Adapters, Cutter Adapters, Pilot Drills and Machine Adapters are ordered separately (see above).

TRANSMATE