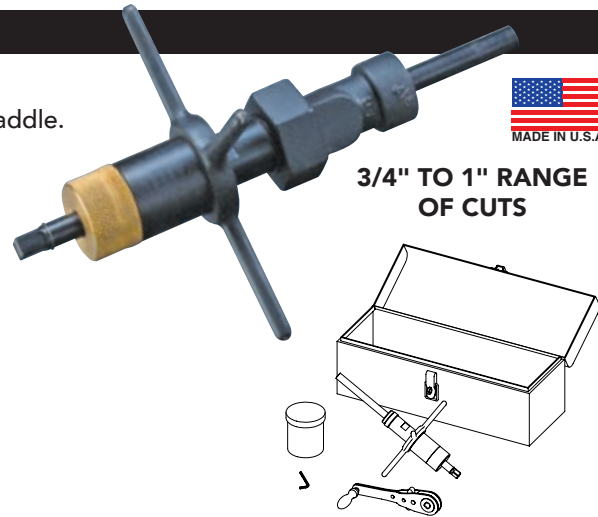


# M-1™ PIPE DRILLING MACHINE



## MATERIAL SPECIFICATIONS

- Weighs approximately 10 lbs and easy to handle, 14" long.
- 3/4" to 1" range of cuts using a separate corporation stop and saddle.
- Cuts all types of water mains, wet and dry.
- Easy to set up and use.
- Uses TapMate Too adapters, arbor, shell cutters and ratchet.



**3/4" TO 1" RANGE OF CUTS**

**TO ORDER:**

1. Order Base Machine.
2. Order Cutters or Spade Bits per desired cut size and pipe type.
3. Order Adapters per size and corp outlet type.
4. Order Small Holesaw Arbor.
5. Power Option if desired (see TM-28).

ITEM NUMBER	DESCRIPTION	LIST PRICE
<b>352-00</b>	<b>M-1 Drilling Machine</b>	<b>\$2,142.12</b>
	Included with M1 Machine:	
351-60-1	Ratchet Wrench	included
352-60-3	5/32" Allen Wrench	included
352-61	Tool Box	included
353-10-1	Tapping Compound	included
<b>HOLESAWS (require Small Holesaw Arbor)</b>		
<b>For Ductile, Cast Iron &amp; A/C</b>		
351-01-106	3/4" Carbide Cutter (actual O.D. 1 1/16")	210.31
351-01-108	1" Carbide Cutter (actual O.D. 7/8")	237.06
351-01-406	3/4" HSS Carbide Tip Holesaw (actual O.D. 1 1/16")	73.81
351-01-408	1" HSS Carbide Tip Holesaw (actual O.D. 7/8")	86.81
351-01-506	3/4" Bimetal Holesaw <sup>1</sup>	41.53
351-01-508	1" Bimetal Holesaw <sup>1</sup>	46.99
<b>For PVC Only</b>		
351-01-206	3/4" Cutter for PVC (actual O.D. 1 1/16")	218.78
351-01-208	1" Cutter for PVC (actual O.D. 7/8")	223.73

<b>SPADE BITS</b>		
351-03-12	Spade Bit Holder	458.51
351-03-106	3/4" Spade Bit (actual O.D. 1 1/16")	127.96
351-03-108	1" Spade Bit (actual O.D. 23/32")	134.27
351-60-5	Torx Key Wrench	13.45

<sup>1</sup> Recommended for Steel Pipe.  
<sup>2</sup> For use on 1" Corporations with 1-1/4" outlet threads.

ITEM NUMBER	DESCRIPTION	LIST PRICE
<b>ADAPTERS</b>		
351-05-406	3/4" Female Iron Pipe Adapter	\$230.65
351-05-408	1" Female Iron Pipe Adapter	230.65
351-05-410	1 1/4" Female Iron Pipe Adapter <sup>2</sup>	230.65
351-05-506	3/4" Coarse Thread Compression Adapter	230.65
351-05-508	1" Coarse Thread Compression Adapter	230.65
351-05-510	1 1/4" Coarse Thread Compression Adapter <sup>2</sup>	230.65
351-05-606	3/4" Male Iron Pipe Adapter	230.65
351-05-608	1" Male Iron Pipe Adapter	230.65
351-05-706	3/4" Fine Thread Compression Adapter	230.65
351-05-708	1" Fine Thread Compression Adapter	230.65
351-05-710	1 1/4" Fine Thread Compression Adapter <sup>2</sup>	230.65

*Special adapters can be made upon request*

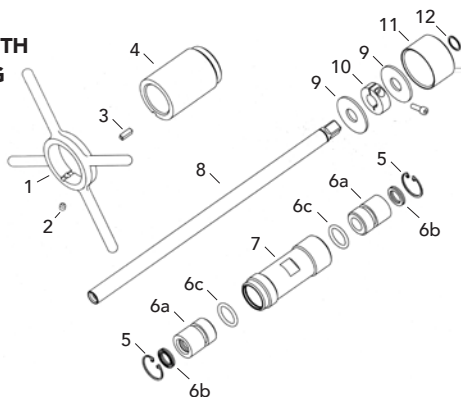
*\* Corp. Stop Adapter Cross Reference at [www.romac.com/tapmate-too](http://www.romac.com/tapmate-too)*

<b>ARBOR</b>		
351-14-1	Small Holesaw Arbor, (includes Arbor Pilot Drill 351-01-402) (use with 3/4" and 1" cutters / holesaws)	143.22
351-01-402	1/4" Arbor Pilot Drill (for small holesaw arbors) included w/ large & small arbors	29.07

<b>POWER OPTION</b>		
373-351	Ridgid 690-I Electric Drive w/1/2" sq. adapter	5,120.74
370-70	GF-15 Ground Fault Interrupter Plug (required)	219.13

<b>TAPPING COMPOUND</b>		
353-10-1	Tapping Compound	56.44
353-10-3	Tapping Compound / Case (12)	650.93

**M-1 PARTS INCLUDED WITH M1 DRILLING MACHINE**



REF. NO.	DESCRIPTION	ITEM NUMBER	LIST PRICE
<b>1</b>	Handle for Lead Nut	351-29-1	\$270.83
<b>2</b>	Arbors & Handle Set Screw	351-51-2	2.20
<b>3</b>	Lead Nut Key	351-24-66	8.64
<b>4</b>	M1 Feeder	352-24	228.30
<b>5</b>	Lead Tube Snap Ring	351-23-54	4.28
<b>6</b>	Lead Tube Bushing Complete	351-22-2A	134.27
<b>6a</b>	Lead Tube Bushing	351-22-2	123.01
<b>6b</b>	Poly Pak Seal	351-57-2	11.16
<b>6c</b>	Lead Tube Bushing O-Ring	351-57-1-62	2.20
<b>7</b>	Body	352-23	294.87
<b>8</b>	Shaft, Main	352-20	279.05
<b>9</b>	Thrust Washer	352-53-1	29.59
<b>10</b>	Clamp	352-63	49.33
<b>11</b>	Bronze Cap	352-35	236.30
<b>12</b>	Retaining Snap Ring	352-54	15.72

Drill Holders, Drills, Holesaws, PVC Adapters, Cutter Adapters, Pilot Drills and Machine Adapters are ordered separately (see above).

TRANSMATE