

# TAPMATE™

## 3" TO 12" RANGE OF CUTS



### MATERIAL SPECIFICATIONS

- **LATERAL TAPS** - For 3"– 12" lateral taps.
- **LIGHTWEIGHT** - Weighs 65 lbs., allowing easy handling and operation.
- **EASY-TO-USE** - No hidden gears or mechanisms. Simple control and the depth scale is always visible.
- **PIPE COMPATIBILITY** - Taps any pipe commonly used in underground water mains.
- **EASY TO MAINTAIN** - Simple construction allows in-house maintenance and repair.
- **FLEXIBLE** - Use with hydraulic, electric or air drive units.



**TO ORDER:**

1. Order Base Machine.
2. Order Power Unit (below).
3. Order Adapters per size and outlet type.
4. Order Cutters per size and pipe type.
- 4a. 10" & 12" size on size C900 DR14 and some thicker wall IPS PVC cuts require undersize cutters (9.00 & 11.00 actual O.D.). Check Travel Chart for requirements.

**ACCESSORIES:**

5. If doing 9"– 12" taps, you must order Pilot Drill Extension (350-14).
6. Order Extra Spade Bit (350-03-08) if doing A/C taps.
7. Some thick wall PVC mains 14" and larger require the use of the deep throat HDPE pilot (350-04H). Check Travel Chart for requirements.

ITEM NUMBER	DESCRIPTION	LIST PRICE
350-00	<b>TAPMATE™ BASE MACHINE &amp; STORAGE BOX</b> For lateral tapping	<b>\$18,813.73</b>

**INCLUDED WITH TAPMATE MACHINE:**

350-21-A	1" Shaft Nose	included
350-03-08	1" Spade Bit	"
350-04	PVC Pilot	"
350-61	Storage Box	"
353-10-1	Tapping Compound	"

360-00	<b>QUIKVALVE™ BASE MACHINE</b> For lateral tapping, QuikValve™ & InsertaValve™ installations For QuikValve see QV-2 & InsertaValve see QV-7	See pg. QV-5 for pricing
--------	---	--------------------------

**POWER OPTIONS**

370-000	Electric Drive	pg. TM-28
371-00	Air Drive	pg. TM-29
372-00	Hydraulic Drive*	pg. TM-26

Contact Romac Industries for other power options

**ADAPTER BELLS**

350-05-1024	3" MJ Adapter Bell	\$847.90
350-05-1032	4" MJ Adapter Bell	965.60
350-05-1048	6" MJ Adapter Bell	1,111.67
350-05-1064	8" MJ Adapter Bell	1,309.29
350-05-1080	10" MJ Adapter Bell	1,712.77
350-05-1096	12" MJ Adapter Bell	1,927.72
350-05-2024	3" 125# Flange Adapter Bell	813.20
350-05-2032	4" 125# Flange Adapter Bell	965.60
350-05-2048	6" 125# Flange Adapter Bell	1,139.73
350-05-2064	8" 125# Flange Adapter Bell	1,310.34
350-05-2080	10" 125# Flange Adapter Bell	2,354.61
350-05-2096	12" 125# Flange Adapter Bell	2,569.00

Adapter Bells for both metric and push-on style pipe connections are also available

**Special Adapter Bells can be made upon request .**

<sup>1</sup> 9"– 12" Cutters require the Pilot Drill Extension  
<sup>2</sup> Non-standard size, see note 4a. in "To Order" above.  
 \* Considered hazardous material if shipped by air.

ITEM NUMBER	DESCRIPTION	ACTUAL SIZE	LIST PRICE
<b>SHELL CUTTERS</b>			
<b>For Ductile, Cast Iron, Steel, A/C &amp; PVC</b>			

350-01-1024	3" Carbide Cutter	2½"	\$ 909.07
350-01-1032	4" Carbide Cutter	3½"	1,181.95
350-01-1048	6" Carbide Cutter	5½"	1,751.91
350-01-1064	8" Carbide Cutter	7½"	2,317.20
350-01-1085 <sup>1,2</sup>	9" Carbide Cutter	9"	5,174.17
350-01-1080 <sup>1</sup>	10" Carbide Cutter	9½"	5,174.17
350-01-1088 <sup>1,2</sup>	11" Carbide Cutter	11"	6,119.99
350-01-1096 <sup>1</sup>	12" Carbide Cutter	11½"	6,119.99

**For HDPE & PVC**

350-01-2024	3" Cutter for HDPE & PVC Pipe	2½"	906.71
350-01-2028	Full 3" Cutter for HDPE & PVC Pipe	3"	1,179.19
350-01-2032	4" Cutter for HDPE & PVC Pipe	3½"	1,179.19
350-01-2040	Full 5" Cutter for HDPE & PVC Pipe	5"	1,747.65
350-01-2048	6" Cutter for HDPE & PVC Pipe	5½"	1,747.65
350-01-2056	Full 7" Cutter for HDPE & PVC Pipe	7"	2,307.14
350-01-2064	8" Cutter for HDPE & PVC Pipe	7½"	2,307.14
350-01-2072 <sup>1,2</sup>	Full 9" Cutter for HDPE & PVC Pipe	9"	5,161.27
350-01-2080 <sup>1</sup>	10" Cutter for HDPE & PVC Pipe	9½"	5,161.27
350-01-2088 <sup>1,2</sup>	Full 11" Cutter for HDPE & PVC Pipe	11"	6,107.22
350-01-2096 <sup>1</sup>	12" Cutter for HDPE & PVC Pipe	11½"	6,107.22

**For Steel**

350-01-5024	3" Cutter for Steel	2½"	908.89
350-01-5032	4" Cutter for Steel	3½"	1,181.95
350-01-5048	6" Cutter for Steel	5½"	1,751.91
350-01-5064	8" Cutter for Steel	7½"	2,317.20
350-01-5080 <sup>1</sup>	10" Cutter for Steel	9½"	5,174.17
350-01-5096 <sup>1</sup>	12" Cutter for Steel	11½"	6,122.72

**NOTE: Shell Cutters can be resharpened, and retooled**

**ACCESSORIES**

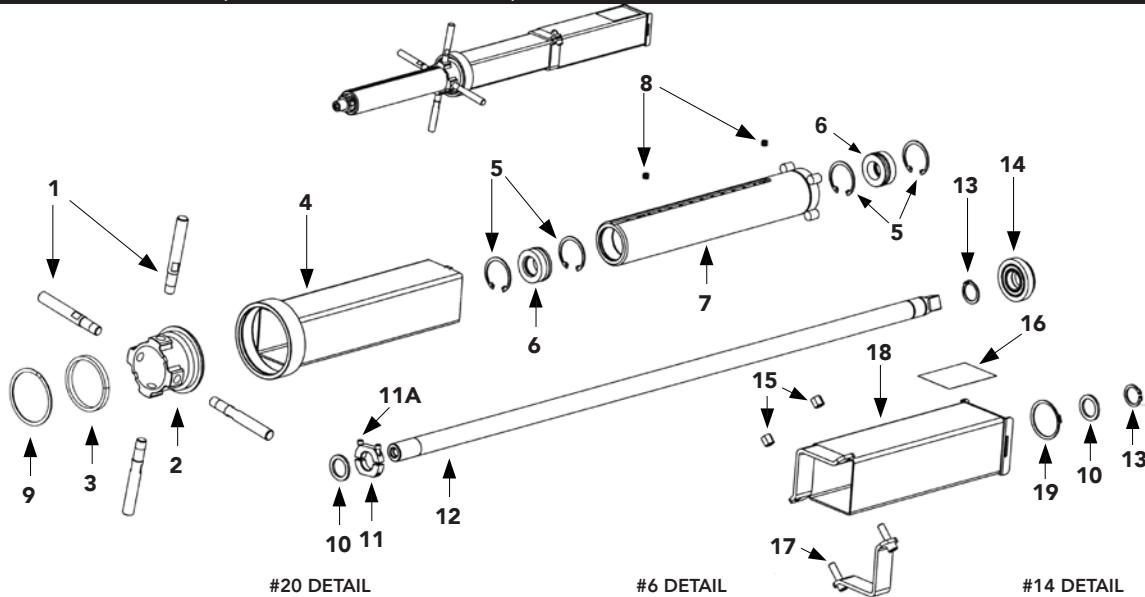
350-03-08	1" Spade Bit		\$ 171.25
350-21-A	Shaft Nose (includes 1" Spade Bit)		642.22
350-14 <sup>1</sup>	Pilot Drill Extension (required for 10" & 12" taps)		256.14
350-04	PVC Pilot		323.36
350-04H	HDPE Pilot		650.30
	(required for some 14" and larger thick wall PVC)		
350-05-571	Adapter Bell O-Ring		29.24
350-05-512	Adapter Set Screw		11.80

TRANSMATE

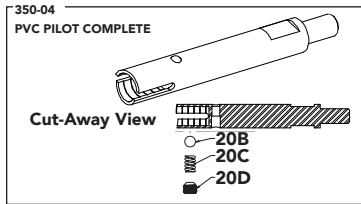


# TAPMATE™ PARTS LIST

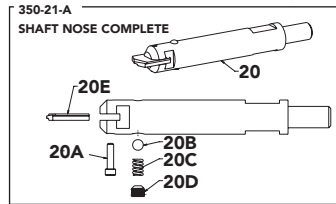
## TAPMATE™ 350-00 (BASE MACHINE ONLY)



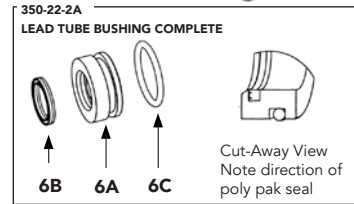
#21 DETAIL



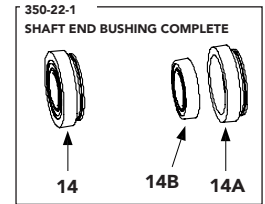
#20 DETAIL



#6 DETAIL



#14 DETAIL



REF. NUMBER	DESCRIPTION	ITEM NUMBER	LIST PRICE
1	Handle for Lead Nut (4 required)	350-29	ea. \$164.47
2	Lead Nut	350-24	1,057.11
3	Lead Nut Nylatron Washer	350-24-531	73.26
4	Thrust Tube	350-32	1,526.84
5	Lead Tube Snap Ring (4 required)	350-23-54	ea. 21.18
6	Lead Tube Bushing Complete (2 required)	350-22-2A	ea. 444.65
6A	Lead Tube Bushing Only (2 required)	350-22-2	ea. 361.42
6B	Shaft Poly Pak Seal (1 per bushing, 2 per machine)	350-57-2	ea. 45.19
6C	Lead Tube Bushing O-Ring (1 per bushing, 2 per machine)	350-57-1-62	23.49
7	Lead Tube	350-23	2,513.35
8	Lead Tube Socket Plug (2 required)	350-23-512	ea. 11.80
9	Lead Nut Snap Ring	350-24-54	46.99
10	Jam Nut Thrust Washer (2 required)	350-20-531	ea. 36.33
11	Jam Nut (for cutters)	350-52	98.78
11A	Jam Nut Set Screw	350-52-1	2.10
12	Shaft Main	350-20	1,643.60
13	Shaft End Snap Ring (2 required)	350-20-54	ea. 21.18
14	Shaft End Bushing Complete	350-22-1	460.44
14A	Shaft End Bushing	350-22	255.51
14B	Shaft End Bearing	350-20-56	211.44
15	Brake Nut (2 required)	350-31-52	ea. 14.09
16	Serial Number Plate	350-58	25.77
17	Brake Half, Threaded	350-31	197.29
18	Brake Tube Complete	350-30	1,526.84
19	Shaft End Bushing Snap Ring	350-22-54	21.18
20	Shaft Nose Complete	350-21-A	642.22
20A	Spade Bit Lock Screw	350-03-531	11.80
20B	Coupon Retainer Ball (5/16)	350-21-561	11.80
20C	Coupon Retainer Spring	350-21-55	12.57
20D	Coupon Retainer Set Screw	350-21-512	11.80
20E	1" Spade Bit	350-03-08	171.25
21	PVC Pilot Complete	350-04	323.36

Manufactured with Domestic and Import material. For Domestic requirements please contact our Quotations Department.